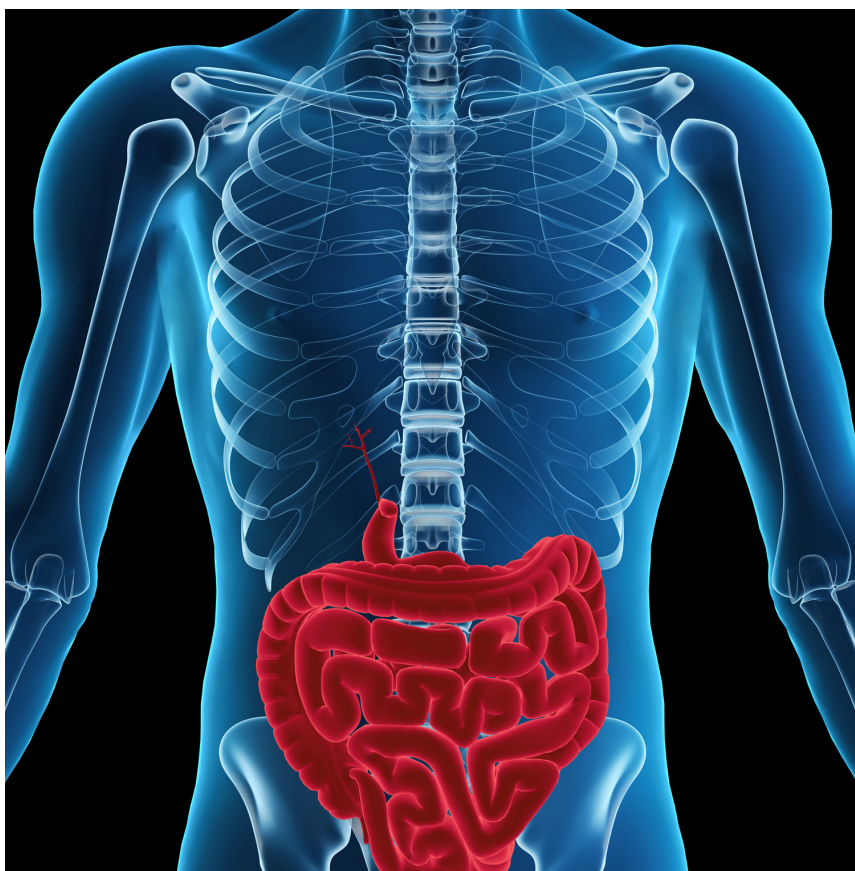




21st Annual Educational Meeting in Gastroenterology

February 19-20, 2021

Earn CME Credits and ABIM MOC Points



Virtual Activity

COURSE DIRECTOR

Shelly Lu, MD

CO-DIRECTORS

Quin Liu, MD
Gil Melmed, MD

Ali Rezaie, MD
Ju Dong Yang, MD

Register Online: cedars.cloud-cme.com/gastroenterologycme

ACTIVITY INFORMATION

The 21st Annual Cedars-Sinai Educational Meeting in Gastroenterology is a unique continuing medical education virtual activity designed to provide attendees with relevant information regarding new developments in gastroenterology and new approaches to the management of gastrointestinal diseases. A group of national experts will present new findings and guidelines in a clinical context. This two-day virtual activity is intended for gastroenterologists and all other healthcare professionals who treat patients with gastrointestinal disorders. In addition to lecture-format presentations, the course will include the following interactive virtual instructional formats: debate and panel discussions, Q & A sessions, case discussions, and interactive video presentations.

ACCREDITATION STATEMENT

Cedars-Sinai Medical Center is accredited by the Accreditation Council for Continuing Medical Education to provide continuing medical education for physicians.

CREDIT DESIGNATION STATEMENT

Cedars-Sinai Medical Center designates this live activity for a maximum of 12.5 AMA PRA Category 1 Credits™. Physicians should claim only the credit commensurate with the extent of their participation in the activity.

NON-PHYSICIAN ATTENDANCE

A certificate of participation will be provided to other healthcare professionals requesting credits. Participants should ensure in advance that their credentialing or licensing organization accepts AMA PRA Category 1 Credits™.

AMERICAN BOARD OF INTERNAL MEDICINE (ABIM) MOC RECOGNITION STATEMENT

Successful completion of this CME activity, which includes participation in the evaluation component, enables the participant to earn up to 12.5 Medical Knowledge MOC points in the American Board of Internal Medicine's (ABIM) Maintenance of Certification (MOC) program. It is the CME activity provider's responsibility to submit participant completion information to ACCME for the purpose of granting ABIM MOC credit.

REGISTRATION FEES

| | |
|---------------------|------|
| Physicians | \$50 |
| Non-Physicians | \$50 |
| Residents/Fellows | FREE |
| Cedars-Sinai Nurses | FREE |

Register Online: cedars.cloud-cme.com/gastroenterologycme

AGENDA

Friday, February 19, 2021

| | | |
|----------------|---|---|
| 8:00-8:30 AM | Virtual Exhibits | |
| 8:30-8:40 | Intro and pre-test questions | Gil Melmed, MD |
| 8:40-9:00 | Fibrostensis in Crohn's disease | Florian Rieder, MD |
| 9:00-9:20 | Monitoring patients on IBD therapies – what and how | Christina Ha, MD |
| 9:20-9:40 | Covid and IBD update | Dermot McGovern, MD |
| 9:40-10:00 | Panel discussion/questions | |
| 10:00-10:20 | Break | |
| 10:20-11:10 | Case discussion | <p>Moderator: Gil Melmed, MD</p> <p>Presenters: Rashmi Kumar, MD Keren Appel, MD</p> <p>Panel: Eric Vasiliauskas, MD Stephan Targan, MD Edward Feldman, MD Karen Zaghiyan, MD Shervin Rabizadeh, MD, MBA</p> |
| 11:10-11:20 | Break | |
| 11:20-11:40 | Breakout Session 1 | |
| | <p>A Dual biologic therapies – when and how</p> <p>B Enhancing Recovery after Surgery (ERAS) for IBD</p> | <p>Christina Ha, MD, Florian Rieder, MD</p> <p>Kelly Issokson, RD, Karen Zaghiyan, MD</p> |
| 11:40-12:00 PM | Breakout Session 2 | |
| | <p>A Management of patients hospitalized with IBD</p> <p>B What should first-line therapy be for IBD?</p> | <p>Gaurav Syal, MD, Phillip Fleshner, MD</p> <p>Eric Vasiliauskas, MD, David Ziring, MD</p> |
| 12:00-12:45 | Lunch break/Virtual Exhibits | |
| 12:50-1:00 | Intro and pre-test questions | Quin Liu, MD |
| 1:00-1:40 | The future of colorectal cancer screening: beyond the basics | Jason Domintz, MD |
| 1:40-2:00 | Approach to difficult polyps | Kenneth Park, MD |
| 2:00-2:20 | Panel discussion/questions | |
| 2:20-2:30 | Break | |
| 2:30-2:50 | Medical management of idiopathic recurrent acute pancreatitis | Srinivas Gaddam, MD |
| 2:50-3:10 | Management of pain in chronic pancreatitis | Simon Lo, MD |
| 3:10-3:30 | New tools for old diseases: OTSC, suturing, full-thickness resection | Kapil Gupta, MD |
| 3:30-3:50 | How to optimize enteral nutrition support for your patients | Shirley Paski, MD MSc |
| 3:50-4:10 | Panel discussion/questions | |
| 4:10-4:30 PM | Review answers to questions | Quin Liu, MD |

Saturday, February 20, 2021

| | | |
|----------------|--|--------------------------|
| 8:00-8:30 AM | Virtual Exhibits | |
| 8:30-8:40 | Opening remarks and pre-test questions | Ju Dong Yang, MD |
| 8:40-9:00 | Viral hepatitis | Alexander Kuo, MD |
| 9:00-9:20 | PSC/PBC and autoimmune hepatitis | Walid Ayoub, MD |
| 9:20-9:40 | Alcohol-induced liver disease | Vinay Sundaram, MD |
| 9:40-10:00 | Panel discussion/questions | |
| 10:00-10:10 | Break | |
| 10:10-10:30 | Fatty liver | Mazen Noureddin, MD |
| 10:30-11:10 | HCC management | Jorge Marrero, MD |
| 11:10-11:30 | Q/A to speakers | |
| 11:30-11:40 | Closing, review answers | Ju Dong Yang, MD |
| 11:40-12:25 PM | Lunch break/Virtual Exhibits | |
| 12:30-12:40 | Intro and pre-test questions | Mark Pimentel, MD |
| 12:40-1:10 | Gastrointestinal manifestations of COVID-19 | Brennan Spiegel, MD |
| 1:10-1:40 | Updates on diagnosis and management of SIBO | Mark Pimentel, MD |
| 1:40-2:00 | Panel discussion/questions | |
| 2:00-2:10 | Break | |
| 2:10-2:30 | Overlooked causes of bloating | Ali Rezaie, MD |
| 2:30-2:50 | Diagnosis and management of dumping syndrome | Bianca Chang, MD |
| 2:50-3:10 | A clinical guide to ambulatory PH testing | Nipaporn Pichetshote, MD |
| 3:10-3:30 | Panel discussion/questions | |
| 3:30-3:40 PM | Review answers to questions | Ali Rezaie, MD |

Virtual Activity

By registering for the virtual activity, you'll be able to view presentations, hear live audio and interact online. In addition, you'll have access to recorded lectures you can view on demand. This virtual activity will be fully web-based, and you'll need a computer/laptop or tablet, audio and an internet connection.

Details will be emailed to all attendees before the activity. Please be aware that you are not authorized to record, copy or share content in any manner.

CEDARS-SINAI COURSE DIRECTOR

Shelly Lu, MD

Women's Guild Chair in Gastroenterology
Director, the Karsh Division of Gastroenterology and Hepatology
Professor of Medicine
Cedars-Sinai Medical Center

CO-DIRECTORS

Quin Liu, MD

Interventional Gastroenterologist
Assistant Professor of Medicine and Pediatrics
Cedars-Sinai Medical Center

Gil Melmed, MD

Director, Inflammatory Bowel Disease Clinical Research;
Co-Director, Clinical Inflammatory Bowel Disease
Professor of Medicine
Cedars-Sinai Medical Center

Ali Rezaie, MD

Medical Director, GI Motility;
Assistant Professor, Medicine
Cedars-Sinai Medical Center

Ju Dong Yang, MD

Transplant Hepatologist
Assistant Professor of Medicine
Cedars-Sinai Medical Center

GUEST FACULTY

Jason Dominitz, MD

National Director, Gastroenterology
Veterans Health Administration
Professor, Gastroenterology and Medicine
University of Washington, Seattle

Jorge Marrero, MD

Professor, Internal Medicine;
Medical Director, Liver Transplant Program
UT Southwestern Medical Center, Dallas

Florian Rieder, MD

Co-Director, Section for Inflammatory Bowel Diseases
Director, Inflammatory Bowel Diseases Research
Director, Advanced Inflammatory Bowel Diseases Fellowship
Department of Gastroenterology, Hepatology & Nutrition
Digestive Diseases and Surgery Institute
Cleveland Clinic

CEDARS-SINAI FACULTY

Keren Appel, MD

Advanced IBD Fellow
Cedars-Sinai Medical Center

Walid Ayoub, MD

Assistant Medical Director, Liver Disease
and Transplant Center
Professor of Medicine
Cedars-Sinai Medical Center

Bianca Chang, MD

Gastroenterologist
Assistant Professor of Medicine
Cedars-Sinai Medical Center

Edward Feldman, MD

Gastroenterologist
Professor of Medicine
Cedars-Sinai Medical Center

Phillip Fleshner, MD

Shierley Jesslyne and Emmeline Widjaja
Chair in Colorectal Surgery
Director, Colorectal Surgery Research
Professor, Dept. of Surgery
Cedars-Sinai Medical Center

Srinivas Gaddam, MD

Interventional Gastroenterologist
Associate Professor of Medicine
Cedars-Sinai Medical Center

Kapil Gupta, MD

Interventional Gastroenterologist
Associate Professor of Medicine
Cedars-Sinai Medical Center

Christina Ha, MD

Director, Advanced IBD Training
Associate Professor of Medicine
Cedars-Sinai Medical Center

Kelly Issokson, RD

Registered Dietitian, Nutrition
and Integrative IBD Program
Cedars-Sinai Medical Center

Rashmi Kumar, MD

Advanced IBD Fellow
Cedars-Sinai Medical Center

Alexander Kuo, MD

Medical Director, Liver Transplantation
Professor of Medicine
Cedars-Sinai Medical Center

Simon Lo

Director of Endoscopy
F. Waidjaja Family Chair in
Digestive Diseases
Professor of Medicine
Cedars-Sinai Medical Center

Dermot McGovern, MD

Joshua L. and Lisa Z. Greer Chair in
Inflammatory Bowel Disease Genetics;
Professor, Medicine and Biomedical
Sciences; Director, Translational
Research in the Inflammatory Bowel and
Immunobiology Research Institute
Cedars-Sinai Medical Center

Mazen Nouredin, MD

Director, Cedars-Sinai
Fatty Liver Program
Associate Professor of Medicine
Cedars-Sinai Medical Center

Kenneth Park, MD

Interventional Gastroenterologist
Assistant Professor of Medicine
Cedars-Sinai Medical Center

Shirley Paski, MD MSc

Small Bowel Diseases and Nutrition
Associate Professor of Medicine
Cedars-Sinai Medical Center

Nipaporn Pichetshote, MD

Assistant Medical Director, GI Motility
Assistant Professor of Medicine
Cedars-Sinai Medical Center

Mark Pimentel, MD

Program Director, Medically Associated
Science and Technology
(MAST) Program
Professor of Medicine
Cedars-Sinai Medical Center

Shervin Rabizadeh, MD, MBA

Director, Pediatric Gastroenterology
and Inflammatory Bowel Disease
Center; Associate Professor of Pediatrics
Cedars-Sinai Medical Center

Brennan Spiegel, MD

Director, Health Services Research
Editor-in-Chief of the American
Journal of Gastroenterology,
Professor, Medicine
Cedars-Sinai Medical Center

Vinay Sundaram, MD

Director, Hepatology Outcomes
Research; Assistant Medical Director,
Liver Transplantation
Associate Professor of Medicine
Cedars-Sinai Medical Center

Gaurav Syal, MD

Gastroenterologist
Assistant Professor of Medicine
Cedars-Sinai Medical Center

Stephan Targan, MD

Feintech Family Chair in Inflammatory
Bowel Disease; Director, F. Widjaja
Foundation Inflammatory Bowel
and Immunobiology Research Institute
Professor of Medicine
Cedars-Sinai Medical Center

Eric Vasiliauskas, MD

Associate Clinical Director, Inflammatory
Bowel Disease Program
Professor of Medicine and Pediatrics
Cedars-Sinai Medical Center

Karen Zaghiyan, MD

Associate Professor of Surgery
Cedars-Sinai Medical Center

David Ziring, MD

Associate Director,
Pediatric Inflammatory
Bowel Disease Program
Cedars-Sinai Medical Center



8700 Beverly Blvd.
Los Angeles, CA 90048

Non-Profit Org.
U.S. Postage
PAID
Los Angeles, CA
Permit #22328

21st Annual Educational Meeting in Gastroenterology

February 19-20, 2021

Earn CME Credits and ABIM MOC Points

Register Online: cedars.cloud-cme.com/gastroenterologycme

Virtual Activity